

INSET SCALE: 1" = 600'

ZONING MAP OF DOUGLAS MASSACHUSETTS

Dated May 2009, As Amended: January 1, 2021

SCALE: 1" = 1750'



LEGEND

- | | |
|--------------|------------------|
| ROAD | PROPERTY LINE |
| PRIVATE ROAD | COMMON OWNERSHIP |
| TRAIL | IN CONTENTION |
| RIGHT OF WAY | TRACT LINE |
| STATE FOREST | UTILITY EASEMENT |
| TOWN LINE | WATER |
| STATE LINE | WETLAND |

ZONING

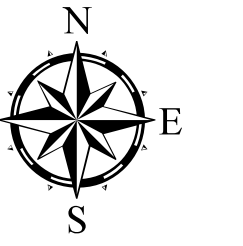
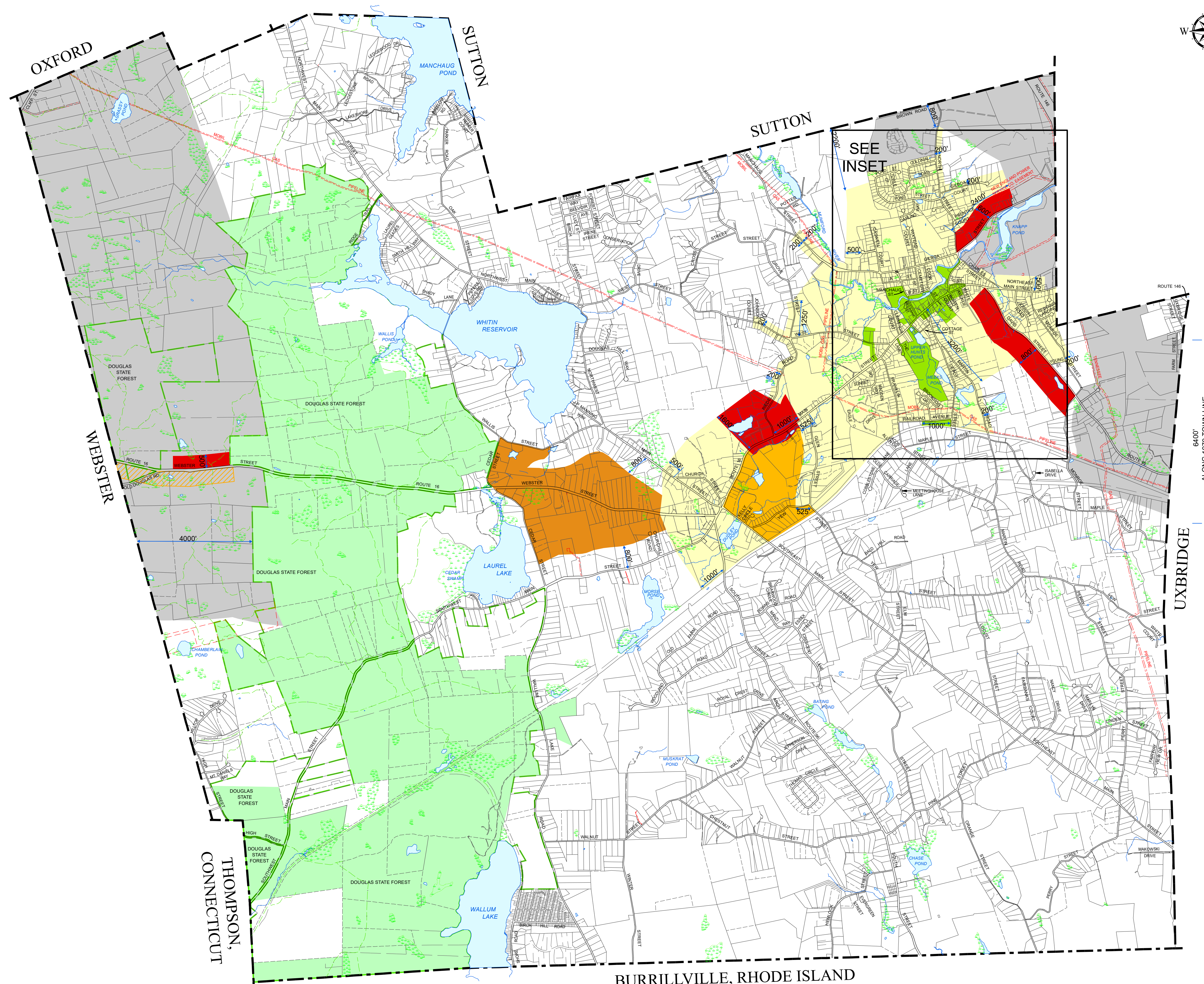
- | | |
|------------------------------|--------------------------------------|
| COMMERCIAL | STATE FOREST OPEN SPACE |
| INDUSTRIAL | VILLAGE RESIDENTIAL |
| RURAL AGRICULTURAL | VILLAGE BUSINESS |
| RESIDENTIAL COMMERCIAL - ONE | ADULT ENTERTAINMENT OVERLAY DISTRICT |
| RESIDENTIAL COMMERCIAL - TWO | |

NOTES

THIS MAP IS BASED ON THE TOWN OF DOUGLAS PROPERTY MAPS PREPARED IN 2000 BY CAI TECHNOLOGIES. IT IS INTENDED FOR REFERENCE AND PLANNING PURPOSES ONLY.

PROPERTY LINES CURRENT TO JANUARY 1, 2025

ZONING DATA SOURCE:
ZONING MAP DOUGLAS, MASSACHUSETTS, MAY 1979, PREPARED BY CENTRAL MASSACHUSETTS REGIONAL PLANNING COMMISSION, REVISED AND REPRINTED IN 2015 BY CAI TECHNOLOGIES. BASED ON ARTICLES CURRENT TO MAY 5, 2014 SUPPLIED BY THE TOWN OF DOUGLAS, MA. AMENDED FOR ARTICLES 17 AND 18, APPROVED AT ANNUAL 2019 TOWN MEETING.



6400' ALONG 1979 TOWN LINE